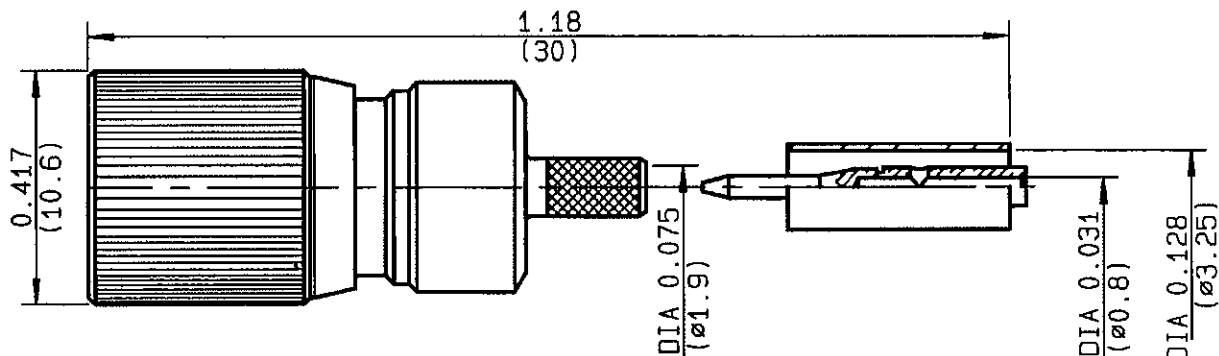


STRAIGHT PLUG CRIMP TYPE
CABLE 2.6/75 SBR

Series : DIN V1.6-5.6

1 / 2



CABLES : RG 179 B/U - RG 187 A/U - L 910/22 - INL 90 010 175 (FLEX 2)

CHARACTERISTICS

NOMINAL IMPEDANCE	75 Ω
FREQUENCY RANGE	0 - 1 GHz
TEMPERATURE RATING	-55/+155 °C
VSWR	1.15 + 0 x F(GHz)Max1
RF INSERTION LOSS	TBD √F(GHz) dB Max1
VOLTAGE RATING	1000 Vrms Max
DIELECTRIC WITHSTANDING VOLTAGE	1500 Vrms min
INSULATION RESISTANCE	500 MΩ.min
HERMETIC SEAL	- cc/s - Atm.cm3/s
LEAKAGE (pressurized only)	- psi - MPa
WEIGHT	0 Oz 6.8 g

STANDARDISATION

CABLE RETENTION	11.23	lb min
CENTER CONTACT RETENTION		
Axial force - mating end	6.06	lb min
Axial force - opposite end	6.06	lb min
Torque (Min)	0	Inch.oz cm.N
RECOMMENDED TORQUES		
Mating	0	Inch.lb cm.N
Panel nut	0	Inch.lb cm.N
Clamp nut	0	Inch.lb cm.N

CONSTRUCTION

CONNECTOR PARTS	MATERIALS	FINISH
BODY	BRASS	NICKEL
OUTER CONTACT	BRONZE PHOSPHOR	GOLD OVER NICKEL
CENTER CONTACT	BRASS	GOLD OVER NICKEL
INSULATOR	PTFE	-
FERRULE	BRASS	NICKEL
-	-	-
-	-	-
-	-	-
-	-	-

ISSUE	REVISION No	DESCRIPTION	BY	DATE
-	-	-	-	-
-	-	-	-	-
6	98-07-009	Updated VFL	TRIPIER	21-10-98

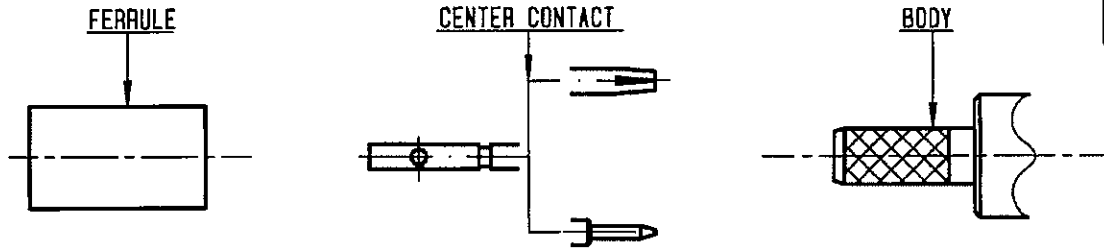
Initiated on 16/10/90

The information given here is subject to change without notice. Design changes may be in order to improve the product.



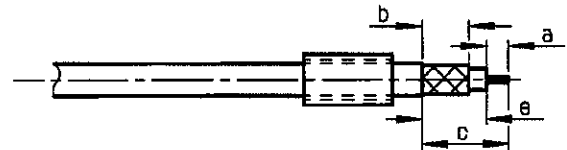
Approval by VIGNARD

FERRY



①

Slide onto the cable the ferrule
Strip the cable .

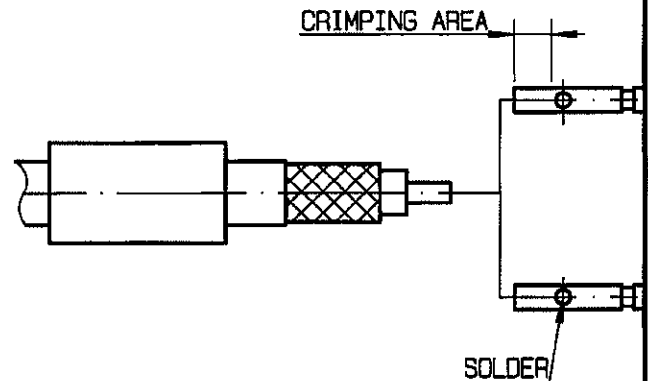


Stripping	a	b	c	d	e
inch	.157	.236	.512	0	.354
mm	4	6	13	-	9

②

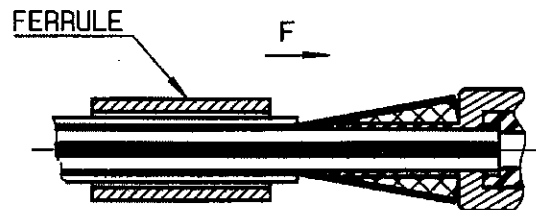
2-1 If crimping: Slide on the centre contact until it bottoms against cable dielectric. Crimp centre contact.
Crimping tool: R282 281 000 + positionner R282 968 000 - position 5

2-2 If solder: Slide the centre contact until it bottoms against cable dielectric. Solder it.



③

Fan the braid .
Slide cable into the body until it bottoms against insulator and contact snaps into insulator. Slide the ferrule over the braid. (in direction F).



④

Crimp the ferrule with crimping tool R 282 211 000 (Hex. : .128) or crimping tool R282 293 (M22520-5-01) + dies R282 235 003 (M22520-5-03)

